

NCDEA DON ARON SCHOLARSHIP FUND

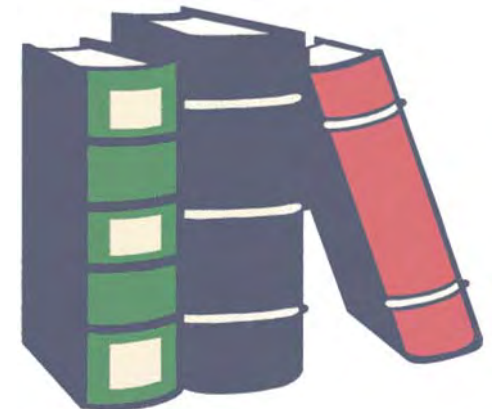
This Scholarship was established in the memory of Don Aron for his foresight of a National Conservation District Employee Association. Don worked to organize NCDEA, establish Bylaws and served as the first President of NCDEA in 1992-1993.

Scholarships are for Conservation District employees and members of their immediate families who are pursuing continuing education in natural resource conservation



RICH DUESTERHAUS
NCDEA EXECUTIVE DIRECTOR
509 CAPITOL COURT NE
WASHINGTON, DC 20002
(202) 547-6223 EXT. 230

RICH DUESTERHAUS
NCDEA EXECUTIVE
DIRECTOR
509 CAPITOL COURT NE
WASHINGTON, DC 20002



National
Conservation
District
Employees
Association

NCDEA Don Aron Scholarship Fund

Name _____

Address _____

Telephone _____

Given as: _____ Donation

_____ In Memory of _____

_____ In Honor of _____

Amount Given: \$ _____



DONALD (DON) ARON
1943-1993

The NCDEA is not only proud of Don Aron's 19-year conservation career, it is also indebted to him for his efforts in establishing the NCDEA.

As the manager of Wisconsin's Wood County Land Conservation Department from 1974 to 1993, Don oversaw a variety of innovative programs dealing with wetlands management and restoration, groundwater research, and watershed management.

In addition to these services he provided locally, Don recognized that conservation efforts are state and national issues.

In serving as an advisor to NACD's District Operations Committee, he began coordinating a collective voice for the district employees. Don brought this concept to a full-fledged national organization in February 1992 and was elected as its first president.

Those that worked closely with Don stated that his dedication to his career encompassed several disciplines within the conservation field. He was a talented technician that was in charge of erosion control and soil preservation programs, he brought his enthusiasm to youth groups and churches and sponsored contests to spread information about conservation. He understood the importance of strengthening relationships among all the conservation partners and served as a member of the Partnership Task Force.

**One of Don's colleagues
Stated that one of his
Strong suits was having
A long-term vision.**

***It is this long-term vision that
SWCD employees and the
NCDEA are committed to***

***Carry on through this
Scholarship fund***

All donations are tax deductible



**RICH DUESTERHAUS
NCDEA EXECUTIVE DIRECTOR
509 CAPITOL COURT NE
WASHINGTON, DC 20002
(202) 547-6223 EXT. 230**